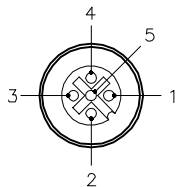
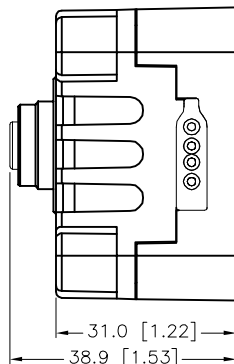
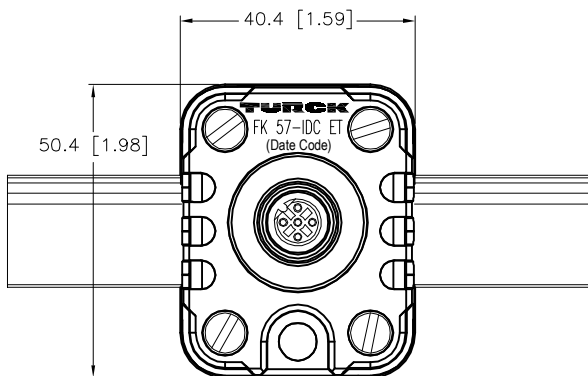


# FEMALE END VIEW



- 1 = BARE (SHIELD)
- 2 = RED (+ VOLTAGE)
- 3 = BLACK (- VOLTAGE)
- 4 = WHITE (CAN\_H)
- 5 = BLUE (CAN\_L)

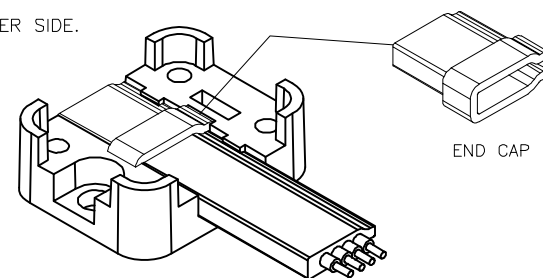


# SPECIFICATIONS

CONTACT CARRIER MATERIAL/COLOR	TPU/BLUE
CONTACT MATERIAL/PLATING	BRASS/GOLD
RATED CURRENT [A]	4.0 A
RATED VOLTAGE [V]	250 V
RECEPTACLE HOUSING MATERIAL/PLATING	BRASS/NICKEL
TOP & BASE MATERIAL/COLOR	BLACK NYLON 6/6
CONDUCTORS	IDC PINS
TEMPERATURE RATING	-40°C to +80°C (-40°F to +176°F)
MOUNTING HOLE	1/4 - 20 SOCKET HEAD SCREW
PROTECTION CLASS	MEETS NEMA 1,3,4,6,13 AND IEC IP67
SPACINGS (EURO)	TO VDE 0110 GROUP C

WHEN USING WITHJUST ONE CABLE;  
USE END CAP.  
CAN BE USED ON EITHER SIDE.

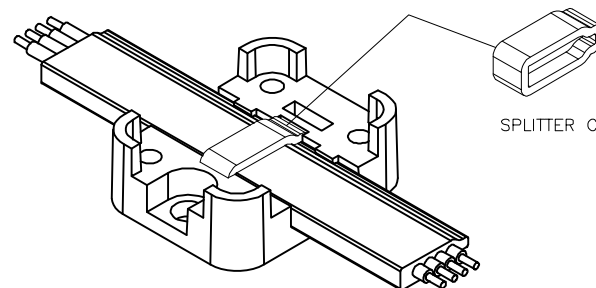
(TOP REMOVED  
TO SHOW DETAIL)



END CAP

WHEN USING WITH TWO CABLES;  
USE SPLITTER CAP.

(TOP REMOVED  
TO SHOW DETAIL)

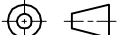


SPLITTER CAP

## ASSEMBLY INSTRUCTIONS:

- 1) PLACE BOTTOM BRACKET ONTO FLAT CABLE IN DESIRED LOCATION OF CONNECTOR.
- 2) ALIGN TOP ASSEMBLY ONTO BOTTOM BRACKET.
- 3) SQUEEZE TOP ASSEMBLY AND BOTTOM BRACKET TOGETHER TO INITIATE PIERCING OF FLAT CABLE.
- 4) TIGHTEN SCREWS IN A AN "X" PATTERN UNTIL ALL SCREWS ARE TIGHTENED.
- 5) INSTALL MOUNTING SCREW TO SECURE CONNECTOR ASSEMBLY.

## SOURCE DRAWING - FOR REFERENCE ONLY

RELATED DOCUMENTS  1.  2.  3.  4.	3RD ANGLE PROJECTION	<div>THIS DRAWING IS CONFIDENTIAL AND THE PROPERTY OF TURCK INC. USE OF THIS DOCUMENT WITHOUT WRITTEN PERMISSION IS PROHIBITED.</div> <div>TURCK</div>		<div>3000 CAMPUS DRIVE MINNEAPOLIS, MN 55441 1-800-544-7769 (763) 553-7300 (763) 553-0708 fax www.turck.us</div>		
						
MATERIAL	ALL DIMENSIONS DISPLAYED ON THIS DRAWING ARE FOR REFERENCE ONLY	DRFT	RDS	DATE	03/21/05	DESCRIPTION  FK 57-IDC ET
APVD			SCALE	1=1.3		
FINISH		CONTACT TURCK FOR MORE INFORMATION	UNIT OF MEASUREMENT  MILLIMETER [ INCH ]			IDENTIFICATION NO.  U3-00274
	DO NOT SCALE THIS DRAWING			FILE: U3-00274	SHEET 1 OF 1	

D	ADD DATE CODE TO CLICHE	RDS	10/22/20	76238
REV	DESCRIPTION	BY	DATE	ECO. NO.